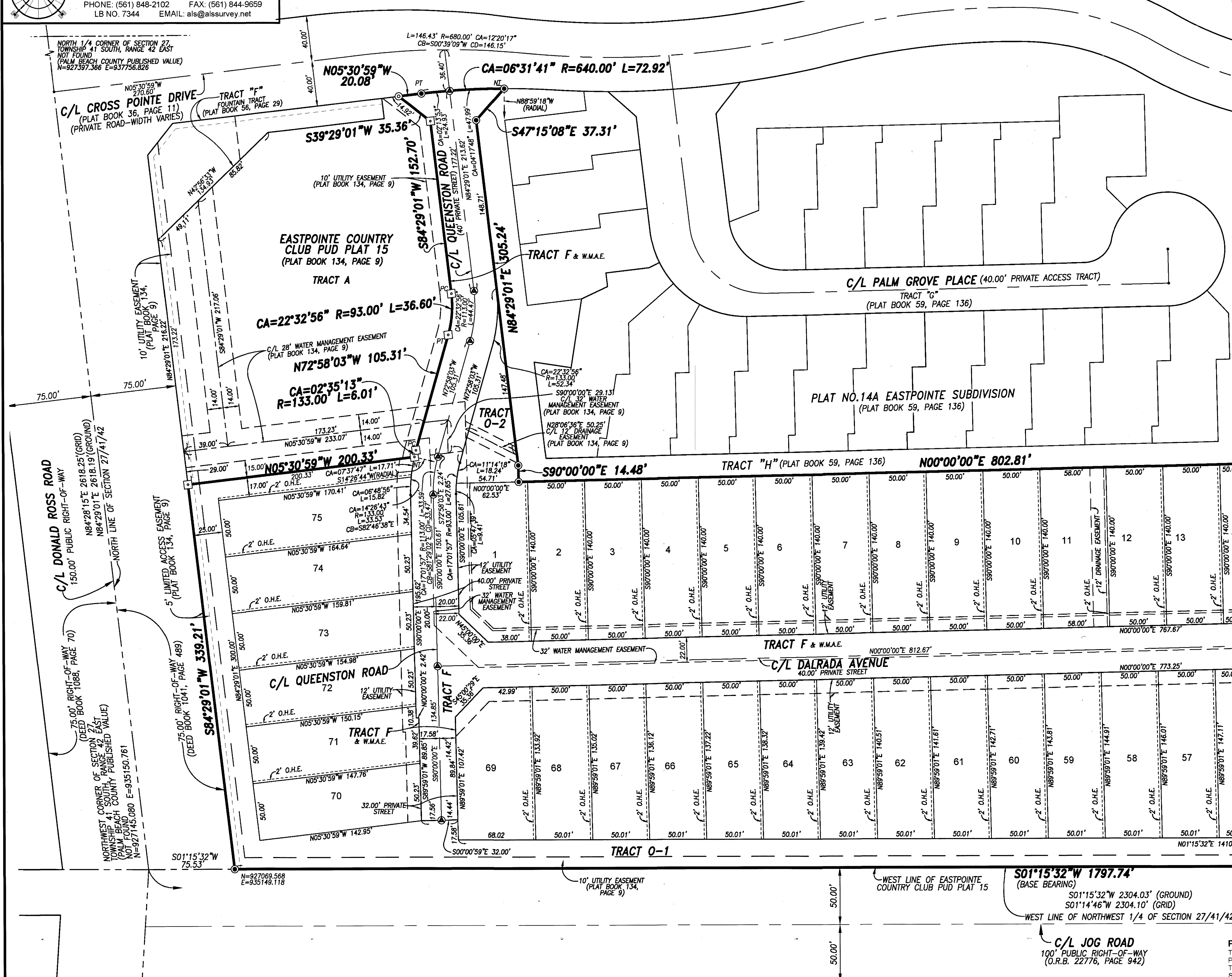


**ASSOCIATED LAND SURVEYORS, INC.**  
 3200 SUMMIT BLVD #1917  
 WEST PALM BEACH, FL 33416  
 PHONE: (561) 848-2102 FAX: (561) 844-9659  
 LB NO. 7344 EMAIL: als@allsurvey.net

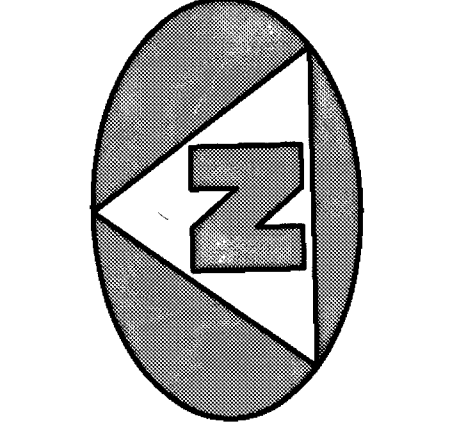
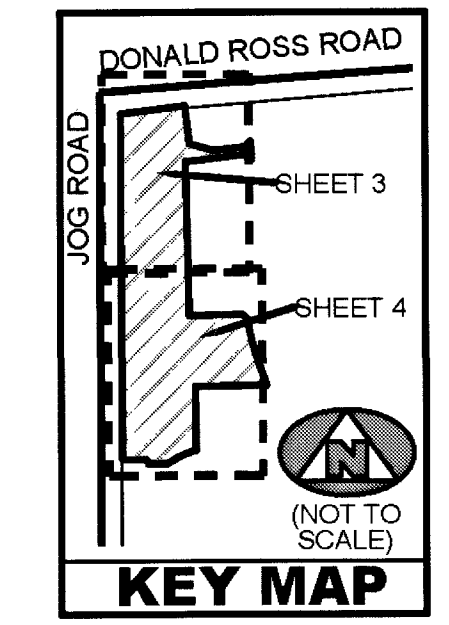
**EASTPOINTE COUNTRY CLUB PUD PLAT 16**  
 BEING A REPLAT OF TRACT C AND TRACT E, EASTPOINTE COUNTRY CLUB PUD PLAT 15, AS RECORDED IN PLAT BOOK 134, PAGE 9, PUBLIC RECORDS OF PALM BEACH COUNTY, FLORIDA, LYING IN SECTION 27, TOWNSHIP 41 SOUTH, RANGE 42 EAST, PALM BEACH COUNTY, FLORIDA

125



**LEGEND**

□	SET PERMANENT REFERENCE MONUMENT	4"x4" CONCRETE MONUMENT WITH NAIL & WASHER STAMPED "LB7344"
○	SET PERMANENT REFERENCE MONUMENT	NAIL & WASHER STAMPED "PRM LB7344"
●	FOUND PERMANENT REFERENCE MONUMENT	5/8" IRON ROD & CAP STAMPED "PRM LB7344"
⊙	PERMANENT CONTROL POINT	
CA	CENTRAL ANGLE	PCC POINT OF COMPOUND
CB	CHORD BEARING	PCV CURVATURE
CD	CHORD DISTANCE	PRC POINT OF REVERSE
C/L	CENTERLINE	PCV CURVATURE
L	ARC LENGTH	PT POINT OF TANGENCY
NT	NOT TANGENT	PUD PLANNED UNIT DEVELOPMENT
O.H.E.	OVERHANG AND ROOF MAINTENANCE EASEMENT	R RADIUS DISTANCE
O.R.B.	OFFICIAL RECORDS BOOK	R/W RIGHT-OF-WAY
PC	POINT OF CURVATURE	W.M.A.E. WATER MANAGEMENT ACCESS EASEMENT



SCALE 1" = 40'

MATCH LINE "A" - SEE SHEET 4 OF 4

- NOTES**  
 COORDINATES, BEARINGS AND DISTANCES:
1. THE BEARING BASIS (BASE BEARING), AS SHOWN HEREON, IS BASED ON THE ASSUMED BEARING OF SOUTH 01°15'32" WEST, ALONG THE WEST LINE OF EASTPOINTE COUNTRY CLUB PUD PLAT 15, AS SHOWN HEREON, AND ALL OTHER BEARINGS ARE RELATIVE THERETO. BEARING ROTATION PLAT TO GRID IS 00°00'48" (COUNTERCLOCKWISE).
  2. THE COORDINATES SHOWN HEREON ARE STATE PLANE GRID COORDINATES ACCORDING TO THE TRANSVERSE MERCATOR PROJECTION OF THE FLORIDA EAST ZONE, N.A.D. 83, PER THE 1990 ADJUSTMENT.
  3. THE LINEAR DIMENSIONS SHOWN HEREON ARE GROUND DISTANCES IN U.S. FEET AND DECIMAL PARTS THEREOF, UNLESS NOTED OTHERWISE.
  4. THE GROUND DISTANCE TO GRID DISTANCE SCALE FACTOR IS 1.0000303 (GROUND DISTANCE x SCALE FACTOR = GRID DISTANCE)

**PREPARING SURVEYOR & MAPPER'S STATEMENT**  
 THIS INSTRUMENT WAS PREPARED BY STEPHEN L. SHIRLEY, PROFESSIONAL SURVEYOR AND MAPPER NO. 3918, IN AND FOR THE OFFICES OF ASSOCIATED LAND SURVEYORS, INC., 3200 SUMMIT BLVD #1917, WEST PALM BEACH, FL 33416